

# The total building envelope redefined

Flynn designs, builds, installs and maintains complete building envelopes – the only trade contractor in North America with the expertise and resources to work on virtually every aspect of a building's outer layer.

We provide commercial, industrial and institutional builders with a comprehensive range of architectural products and building envelope services, including conventional and green roofing, paneling systems, glazing and curtain wall.

For our clients, our ability to work on every component of the building envelope translates into a seamless delivery of services across the different trades, consistent quality of the finished product, and the convenience and assurance of a single point of contact and accountability.

## WHEREVER YOUR PROJECT IS, WE'RE THERE TOO

Flynn is a national company, with people and locations from coast to coast. Whether you are building one project in Toronto, or three simultaneous projects across the border, count on us to have the resources, systems and processes in place to do the job with consistent results across locations. Our national presence also means we can respond quickly to your service needs, no matter what part of the country you're in.

## A BEST MANAGED COMPANY



Flynn is extremely proud to be recognized year after year as one of Canada's Best Managed Companies – a prestigious third-

party distinction that honours business excellence among private companies. Achieving Platinum status as a Best Managed Company confirms the strength of our commitment to our clients, our people, and our industry and recognizes our ongoing efforts to be the building envelope contractor of choice, in all our markets, for all our clients.



## FLYNN 6350 series curtain wall

When performance and quality matter



## FLYNN 6350 series curtain wall

With quality and schedule in mind, 6350 series curtain wall provides the level of performance and constructability suited to meet the versatility of today's architecture. It can be constructed as traditional stick, ladder or unitized system with exterior features such as fully captured, 2-sided & 4-sided Structural Silicone Glazed (SSG). 6350 Series is designed based on the rain-screen principle and suited for low to mid-rise construction and engineered high rise applications, its' unique head and sill design with interior snap covers make it perfect for strip window applications when high performance & air / vapour barrier tie-ins are important.



FLYNN GROUP OF COMPANIES  
[www.flynncompanies.com](http://www.flynncompanies.com)

# FLYNN 6350 series curtain wall

## When performance and quality matter

It's finished appearance and clean sightlines conceal durable materials and features such as silicone setting blocks, silicone compatible gaskets and sealants. Uniquely, integral bolt receptors within mullions facilitate concealed bolting of supplementary reinforcing. The expansion joint horizontal, which features a silicone expandable gasket keyed into a thermal isolator, accommodates 12mm differential floor to floor movement.

If increased thermal performance is required, 6350 series offers optional fiberglass pressure plates which provide improved thermal and condensation resistance without altering systems or exterior appearance.

### PERFORMANCE:

Modular adaptation allows flexibility for frames to be constructed, sealed and glazed in a controlled environment.

Screw spline joinery creates tight fitting joints. The system is designed to accept several styles of insulated back-pans to suit different construction methods, applications and aesthetic features. It is designed to accommodate connecting of engineered A/V barriers along its' perimeter to complete the environmental separation at transition interfaces, together with an engineered polymer to provide compression, balance glazing pressures and reduce thermal conductivity.

### BUILDING DYNAMICS:

Building dynamics are easily accommodated through its modular mullions, internal alignment sleeves and a full functioning stack horizontal accommodating 12mm of differential movement.

## Performance

### 6350 series

|                           |  |  |
|---------------------------|--|--|
| Air In/Exfiltration       | ASTM E-283                               | Not to exceed 0.3L/s*m2 @ P = 300 Pa   |
| Static Water Penetration  | ASTM E-331                               | No uncontrolled water @ P = 718 Pa   |
| Dynamic Water Penetration | AAMA 501.1                               | No uncontrolled water @ P = 718 P  |
| Structural Performance    | ASTM E-330                               | ± 2.0 kpa or per applicable building codes   |
| Thermal Cycling           | AAMA 501.5                               | 3 Cycles each from +80 °C to -20°C   |
| U- Factor                 | AAMA 507, AAMA 1503 and NFRC 100/200/500 | Dependent on glass composition, however, not to exceed 3.6 W/m2* °C based on 25 mm clear IGU |
| Seismic Performance       | AAMA 501.4                               | 3 cycles = 25mm left to right from nominal position  |

## Features

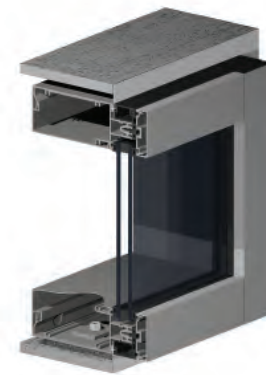
### 6350 series

|               |  |
|---------------|--|
| Site-lines    | Site-lines 63.5mm (2 1/2")   |
| Mullion Depth | 133.3mm (5 1/4" standard) project specific depths on request   |
| Glazing       | <ul style="list-style-type: none"> <li>• Std accepts 25mm &amp; 6mm</li> <li>• Pressure glazed system</li> <li>• Outside glazed</li> <li>• 4-sided Captured</li> <li>• Vertical or Horizontal SSG</li> <li>• 4-sided SSG (shop glazed only)</li> </ul> |
| Infills       | Easily integrates with other manufacturer's doors, windows, panels and composite & stone infills   |
| Corners       | Extruded outside 90° corner accepts modular construction   |

### FEATURE OPTIONS:

- Integration with most available market leading window and door systems.
- Can accommodate brise soleil, sun-shading and building domotics.
- Slim esthetically pleasing corner details.
- Available with optional exterior vertical silicone gasket.
- Unique transom drainage incorporating drainage and ventilation of the back pan.
- Fiberglass pressure plate.
- Shadow box adaptor.

# Construction options



### 6350

#### WINDOW CONSTRUCTION

The system is perfect for vertical and horizontal strip window configurations. Open head and sill profiles with snap in cover plates enable concealed anchoring. The system is designed to accept engineered perimeter air-vapour barriers.



### 6351

#### LADDER CONSTRUCTION

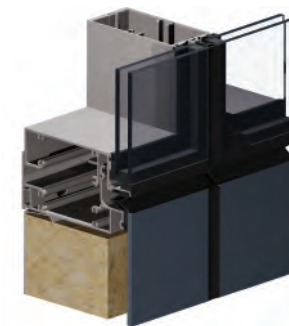
The system allows shop assembly of frames in ladder format with the possibility of pre installed back pans to aid speed of erection with installation of glass, pressure plates and caps on site.



### 6352

#### STICK CONSTRUCTION

The system can be prepped in the shop and shipped in knockdown format for complete assembly, glazing and installation of the pressure plates and caps on site.

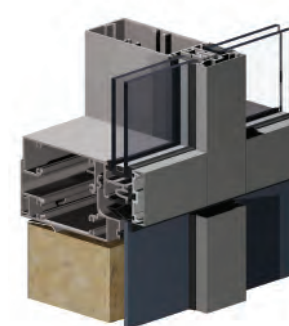


### 6353

#### UNITIZED CONSTRUCTION

Creating modular, pre-glazed frames in the shop ensures consistent quality of assembly and integration of glazing and infills in a controlled environment with less handling of the elements reducing the risk of damage. For added assurance and long-term air and water performance, all vision glass is completely structurally silicone glazed when choosing this method of construction.

Completed frames leave the shop in protective crates ready for installation on site. The result is significant time savings in the overall building program and closing of the building envelope.



### 6354

#### HIGH PERFORMANCE CONSTRUCTION

Superior thermal performance can be achieved utilizing high performance in-fills with the thermally enhanced series incorporating system designed thermal isolators and chambered gaskets in SSG or captured, with optional system fiberglass pressure plates.